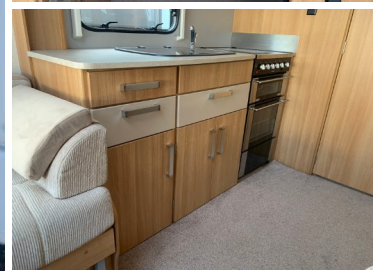


# Sussex

"The Caravan & Motorhome Centre"

2013 Coachman VIP 460/2 (Sussex Special Edition Ch...

£14,999



**Length:** 6500mm  
**Width:** 2320mm  
**Internal Length:** 4850mm  
**Unladen Weight:** 1325kg  
**Laden Weight:** 1450kg

**Sussex Caravan Centre West**

A24 London Road  
 Ashington  
 Pulborough  
 West Sussex, RH20 3BT

CASSETTE TOILET	SHOWER
REAR WASHROOM	WARDROBE
HAND BASIN	3-BURNER HOB
MICROWAVE	SIDE KITCHEN
SINK/DRAINER	OVEN
FRIDGE	TV AERIAL
RADIO	2 BERTH
230V SOCKET	SHOCK ABSORBERS
ATC (ACTIVE TRAILER CONTROL)	CASSETTE BLINDS
DOOR FLYSCREEN	CURTAINS
ELECTRIC RING HOB	DOUBLE GLAZING
MOTOR MOVER	HEKI ROOFLIGHT
OMNIVENT ROOF FAN	LOOSE FIT CARPETS
TRUMA HEATING	SOLAR PANEL
UNIQUE GRAPHICS AND UPHOLSTERY	TYRON BANDS

2 berth, end washroom layout. Load margin: 125kg. Exclusively Sussex. Nice condition 2 berth. Includes fitted Motor Mover, Solar Panel and Tyron bands. COVID-19 Response: View by appointment only. This vehicle can be viewed at our West Sussex branch located in Ashington on the A24. To book a viewing please call our sales team on 01903 893666 For your complete peace of mind all our caravans are finance and CRiS checked, have a full service

Call:01903 893666 | [www.sussexcaravancentre.co.uk/](http://www.sussexcaravancentre.co.uk/)